

Propeller drive

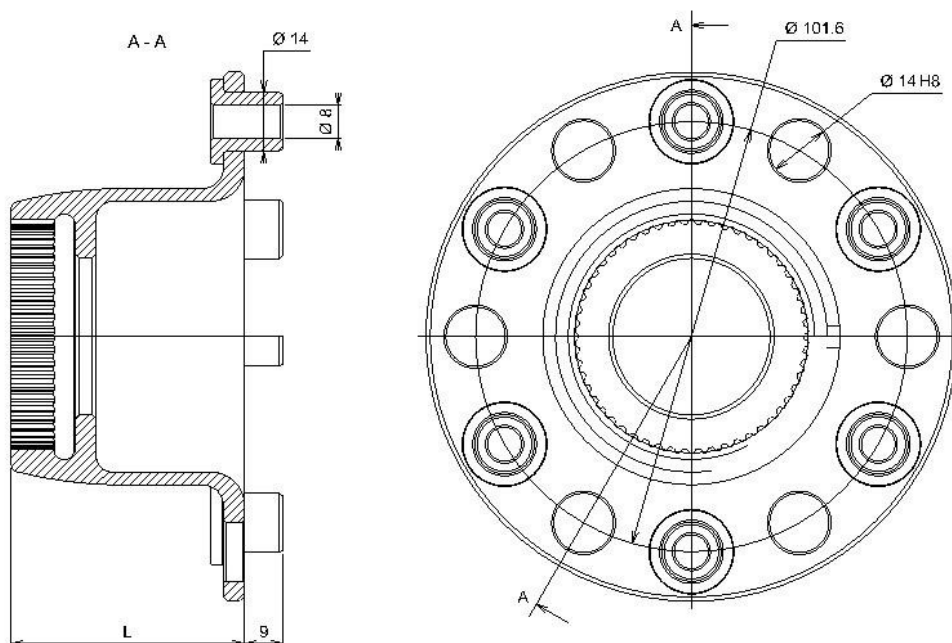
The UL350 is a direct drive engine. The propeller is mounted on the propeller flange which is directly connected to the crankshaft; no gearbox or belt reduction is used. The propeller flange is fixed to crankshaft with a splined connection to take the torque loads and is held in position by a single central bolt. The bolt is locked with a special locking washer. A large ball bearing is used as thrust bearing which is held in position by two disc springs and a spacer ring. This assembly allows engine to be used in either tractor or pusher configuration. Engine turns clockwise when seen from cockpit in tractor configuration.



The propeller must be carefully selected to match the airframe and the engine characteristics. The hub of the propeller must be drilled with holes to match the flange. 6 propeller drive lugs are provided with the engine. These are made to have a tight fit in the propeller flange holes.

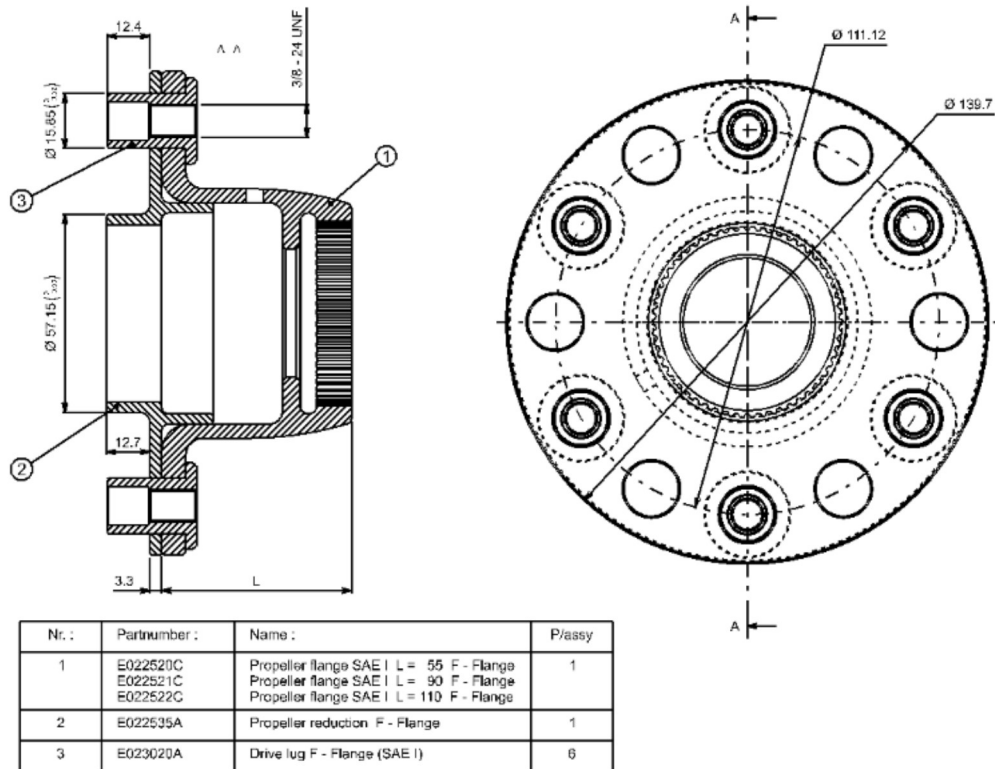
ULPower offers different types of propeller flanges.

1. Standard Flange

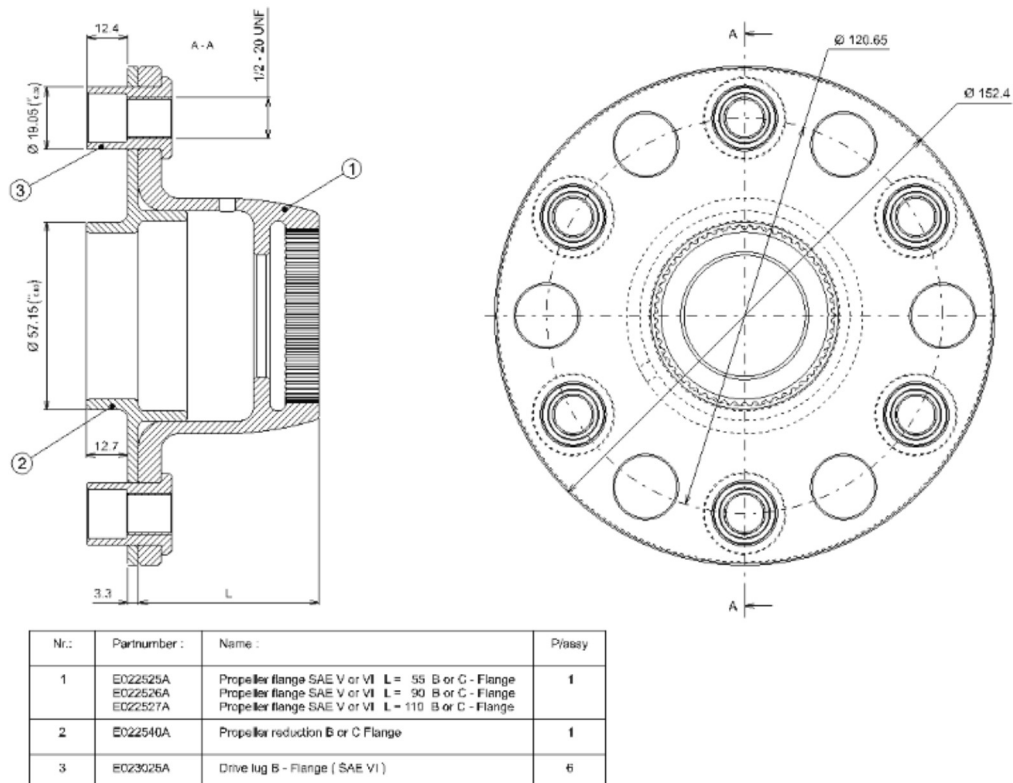


| Discription : | Partnumber : |
|---------------------------------------|--------------|
| Propeller flange L = 55 mm (Standard) | E022501 |
| Propeller flange L = 110 mm | E022504 |
| Propeller flange L = 90 | E022505 |
| Propeller flange L = 35 | E022506 |

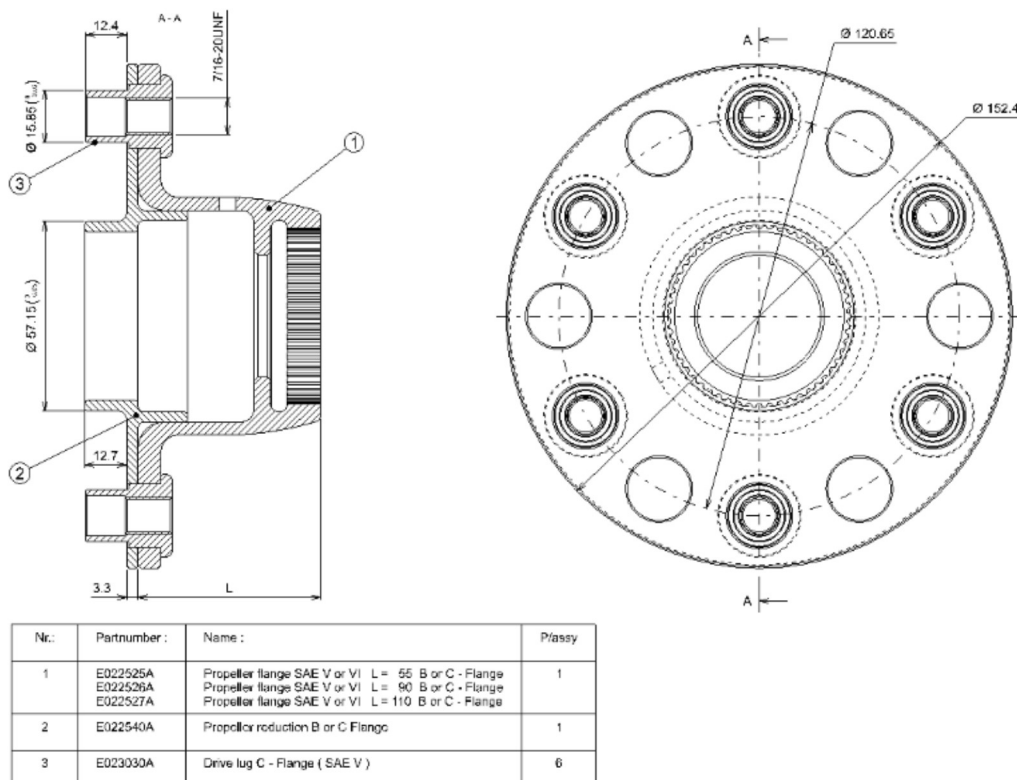
2. SAE I - F – Flange : **E022550 L055 / E022550 L090 / E022550 L110 = assembly**



3. SAE VI - B – Flange : **E022551 L055 / E022551 L090 / E022551 L110 = assembly**



4. SAE VI - C – Flange : **E022552 L055 / E022552 L090 / E022552 L110 = assembly**



5. SAE VI - D – Flange : **E022553 L055 / E022553 L090 / E022553 L110 / E022553 L035 = assembly**

